

UPS Pulsar

700/1000/1500 VA

On-line double conversion UPS

Maximum availability

- Configuration. Double conversion on-line UPS with automatic by-pass and power factor correction.
- Powershare. The Pulsar output sockets are individually controlled to provide load-shedding to maximise the backup time and provide remote reboot and sequential start-up as standard.
- Continuous power supply. Hot swappable batteries. The HotSwap MBP (Maintenance By-Pass) module allows the UPS to be replaced without interrupting the power supply.



HotSwap MBP

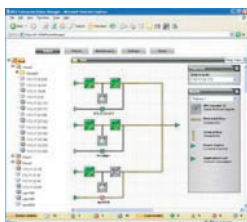
- Long backup times. 1 to 4 EXB battery units can be added to the Pulsar 1000 or 1500.



1 to 4 EXB battery units can be added to increase the backup time of either Pulsar 1000 or 1500 UPSs.

Minimum total cost of ownership

- Easy operation. Multilingual display. Access to a wide range of measurements and set-up menus.
- Remote supervision. A wide range of options using the Solution-Pac supplied: SNMP and HTML, ModBus/JBus and relay outputs.



ConnectUPS Web/SNMP Card and EPM Software



Mini-tower version.



RT2U version.

Flexibility

Pulsar has unmatched Flexibility.

- Format. Pulsar is available in tower format or RT2U convertible rack/tower version (for shallow rack mounting).
- Connections. With FlexPDU and HotSwap MBP, the RT2U models can be connected by sockets or terminal blocks. They can be installed as required, on the side or on top of the unit.
- Compatible with low power factor loads. Pulsar is rated for 0.9 total power factor (1500VA/1350 W, 1000VA/900W and 700VA/630W)
- Interfaces. USB + serial + remote start/stop + slot for optional communications card.



FlexPDU and HotSwap MBP can be mounted in many different positions.



Adjustable multilingual display.

Ideal protection for:



Servers, data storage and network equipment.



Telephony - VoIP.



Medical equipment - Industrial processes.

M G E

Office Protection Systems

An Eaton Brand



Pulsar Tower version

- 1 LCD Multilingual display
 - 6 languages,
 - displays measurements,
 - displays alarms,
 - access to control and set-up menus.
- 2 Panel for replacing batteries without interrupting the output.
- 3 1 USB port + 1 serial port + remote ON/OFF and emergency stop inputs.
- 4 EXB battery unit connector.
- 5 EXB units recognised automatically.
- 6 6 IEC 10A sockets, including 3 Powershare programmable sockets.
- 7 Communications card slot.
- 8 Mountings for HotSwap MBP and FlexPDU.



Pulsar RT2U

Customer Service & Support

2 year guarantee, including batteries
Standard exchange of product in case of failure, including batteries.

Associated services⁽¹⁾

Warranty+: 3 year extended guarantee.

1: Depending on the country, see www.mgeops.com/services.

Communications software and hardware

Solution-Pac software on CD-ROM with each UPS

For monitoring the server(s) powered by the UPS and for local and remote UPS supervision.

ConnectUPS Web/SNMP Card
For connecting the UPS to an Ethernet 10/100 network, raising SNMP alarms and supervising the UPS using a simple browser interface.

Environmental Monitoring Probe
Monitoring the temperature, humidity and 2 relay contacts via SNMP or HTML.

Enterprise Power Manager
For comprehensive management of a set of UPSs using a Windows PC.

Management-Pac 2 suite
NMS integration kit: HP OpenView, IBM Tivoli Netview, CA Unicenter, etc.

Management Card Contacts/Serial
To provide UPS status outputs via relay contacts, emergency stop and a second serial port.

ModBus/JBus card
For combined SNMP, HTML and ModBus/JBus supervision.

Specifications

Pulsar	700	1000 - 1000 RT2U	1500 - 1500 RT2U
Rating	700 VA / 630 W	1000 VA / 900 W ⁽¹⁾	1500 VA / 1350 W ⁽¹⁾
Format	Mini tower	Mini tower or RT2U (tower/rack 2U)	
Electrical characteristics			
Architecture	On-line double conversion with automatic by-pass and power factor correction		
Input voltage and frequency ranges without using batteries	100/120/140/160 V ⁽²⁾ to 284V - 40 to 70 Hz		
Output voltage and frequency	230V (adjustable to 200/208/220/240/250 V), 50/60 Hz auto-select or frequency converter mode ⁽³⁾		
Connections			
Input	1 IEC C14 (10A) socket		
Outputs	6 IEC C13 (10A) sockets		
Remotely controlled Powershare sockets	2 independent groups: 2 + 1 IEC C13 (10A) sockets		
Additional outputs with HotSwap MBP	6 IEC 10A sockets or terminal blocks (HW version)		
Additional outputs with FlexPDU	12 IEC 10A sockets		
Batteries			
Typical backup times for 50 and 70% of the VA rating			
Pulsar	16 mn / 10 mn	18 mn / 12 mn	13 mn / 9 mn
Pulsar + 1 EXB	-	75 mn / 50 mn	50 mn / 35 mn
Pulsar + 4 EXB	-	250 mn / 200 mn	180 mn / 120 mn
Battery management	Automatic weekly test (period adjustable using LCD display or in software supplied), automatic recognition of external battery units => continuous maximisation of backup time + deep discharge protection		
Interfaces			
Indicators and display	3 LEDs + adjustable multilingual display: display of measurements, access to control and set-up menus		
Communication ports	1 USB port + 1 RS232 serial port and relay contacts ⁽⁴⁾ + 1 mini terminal block for remote ON/OFF and emergency stop		
Communications card slots	1		
Operating conditions, standards and approvals			
Operating temperature noise level	0°C to 40°C continuous, 45 dBA		
Performance - Safety - EMC	IEC/EN 62 040-3 (VFI-SS-113), IEC/EN 62 040-1-1, IEC/EN 60 950-1 (RD), IEC/EN 62 040-2 C1 Class		
Approvals	CE, TÜV GS, CB report, cTÜV-US		
Dimensions (H x W x D) / Weight			
Pulsar	242 x 153 x 440 mm / 12.5 kg	242 x 153 x 440 mm / 15 kg	242 x 153 x 490 mm / 18 kg
Pulsar RT2U	-	86.5 x 438 x 483 mm / 18 kg	86.5 x 438 x 483 mm / 20.5 kg
Pulsar EXB	-	242 x 153 x 440 mm / 21 kg	-
Pulsar EXB RT2U	-	86.5 x 438 x 483 mm / 24.5 kg	-

1: Maximum rating with EXB battery units: Pulsar 1000 = 800 W, Pulsar 1500 = 1200 W. 2: Lower limits for <20%, <33%, <66%, >=66% of nominal power (VA). For active output power greater than 0.7 and 0.8 nominal rating, the lower limit is 180V and 190V respectively. 3: Derated by 15% when used as a frequency converter. 4: USB and RS232 serial ports cannot be used simultaneously.

Part numbers

	700	1000	1500
Pulsar	M68 180	M68 181	M68 183
Pulsar RT2U (includes rack kit)	-	M68 182	M68 184
Pulsar EXB	-	M68 185	
Pulsar EXB RT2U (includes rack kit)	-	M68 186	

